

Improving lives together



High Support Inpatient Rehabilitation (Level 2) Service for Men

Cygnet Delfryn House,
Flintshire

Now taking referrals



Cygnet Delfryn House is our high support inpatient rehabilitation (level 2) service for men who have severe and enduring mental illness and who may have been detained under the Mental Health Act. Men placed with us often come from multiple placement breakdowns, failed treatment programmes or are stepping down from secure settings.

By combining a collaborative, multi-disciplinary approach, we deliver high-quality care using our unique 4 stage model of care for our mental health high support inpatient rehabilitation (level 2) services.



Male



18+ years



28 beds



Part of the Welsh Framework



Our service user profile:

- > Detained under the Mental Health Act (1983) or informal
- > Primary diagnosis of mental illness with:
 - Complex comorbidities
 - Substance, drug and alcohol abuse
 - Treatment resistance
 - Behaviours that may challenge
- > Aiming for a return to community or community-based care
- > History of sexual abuse or domestic violence
- > Typical diagnoses: schizophrenia, schizoaffective disorder, bipolar affective disorder or depression
- > May have secondary diagnoses of mild learning disability, autism spectrum disorder or personality disorder
- > May have a forensic history and/or be stepping down from secure services
- > May have a history of repeated acute admissions

Our service at a glance

Set amid the rolling hills of Flintshire, Cygnet Delfryn House benefits from not only being part of the beautiful Welsh countryside, but also being a short drive away from a lovely community with an extensive array of local amenities including, leisure centres, shops, restaurants and cafes.

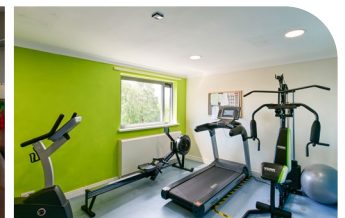
Within the service, all bedrooms have en-suite facilities, some of which are situated on the ground floor to support those who may have mobility issues. We have dedicated therapy space, a gym, a barbers as well as spacious indoor and outdoor communal areas, including a secure courtyard for individuals to have access to a safe outside area.

The service provides a safe and comfortable environment that promotes efficient rehabilitation and recovery. We are dedicated to understand, stabilise and break the traumatic cycles of relapse that can impact service users' lives.

Support is provided to help individuals prepare for independent living, employment and other vocational activities, with a strong focus on financial management and budgeting skills.

The men are supported to create CVs, apply for jobs, practice for and attend interviews as well as develop other skills necessary. We also offer a range of internal therapeutic earning positions where service users have the opportunity to apply for, be interviewed for and take on the responsibility of a suitable job. The men receive training by a staff member that is skilled in the particular job.

We offer more than just specialists and treatments, we value the service users as individuals, help enhance their interests and abilities, encourage them to share their views and help them unlock their talents and aspirations.



Part of the Welsh Framework for which we have a Quality Assurance Rating Certificate of 3Q's



Weekly Mindfulness for staff and patients

Physical health is a high priority providing a seamless service between us and primary care services

24 hour nursing team with least restrictive practice leads



People's Council meeting

Strong external links with Cyfle Cymru providing:



- > Mentorship
- > Qualifications and training
- > Real life work experience
- > Help to search and apply for jobs

82%

of individuals discharged in 2024 were able to step down along their care pathway

Positive Healthcare Inspectorate Wales (HIW) report



Opportunity to develop and explore meaningful goals and occupations



On-site Expert by Experience



On-site experienced Multi-disciplinary team (MDT) providing treatment, therapy and support

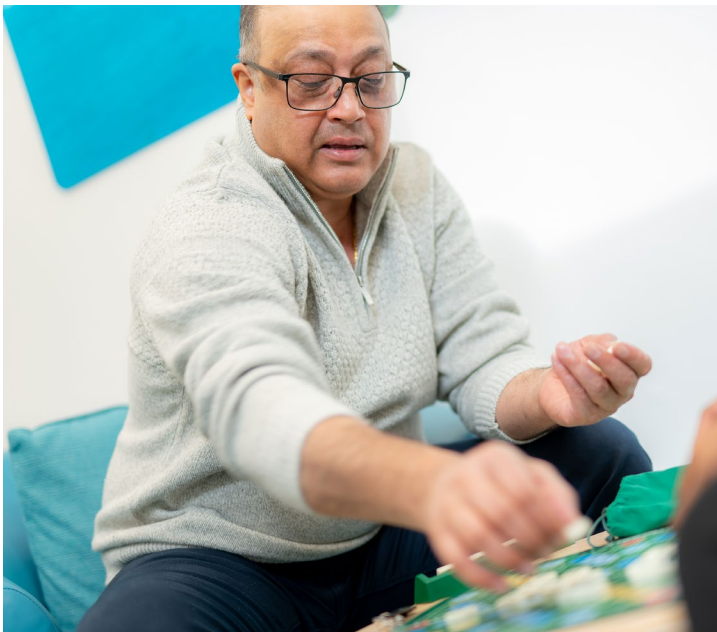
Weekly pet therapy



Weekly reflective group meetings for staff



Onsite gym weekly visits from a personal trainer providing 1-1 support



"We are very satisfied with the care our grandson is getting from all the doctors and staff. Many thanks"
Family member

Our community links:

- > Learndirect & Deeside College
- > Flintshire Local Volunteer Centre
- > Local places of worship
- > Sport facilities at Northop College
- > Cyfle Cymru
- > Photography and walking groups
- > Local beaches
- > Local market

Our facilities:

- > En-suite bedrooms
- > Learning centre with library and computers
- > Multi-faith room
- > Barbers
- > Gym
- > Activities room
- > Therapy kitchen
- > Laundry room
- > Secure outdoor courtyard
- > Spacious communal garden with seating



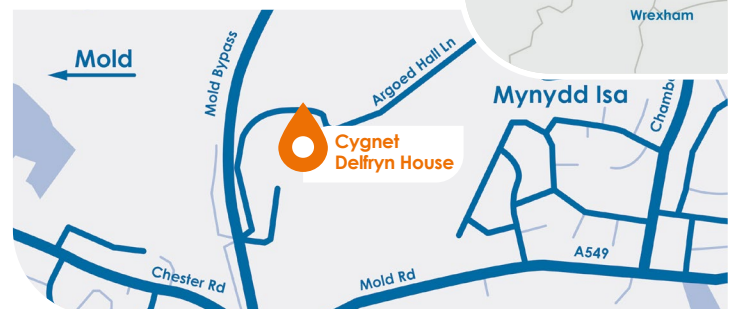
Make a referral

- 1 Referral made to your regional business relationship manager or 0808 164 4450 / chcl.referrals@nhs.net
- 2 Assessment arranged and undertaken via our management team
- 3 Feedback provided on whether our service can meet the individual's needs
- 4 Assessment pack formulated including care plans and funding information
- 5 Admission agreed and plans for transition arranged with referring team following confirmation of acceptance of placement

Where are we?

Cygnët Delfryn House
Argoed Hall Land, Mold,
Flintshire, Wales
CH7 6FQ

Phone number
01352 707220



CYG-1057 | Date of Preparation: 13/01/25

Please visit cygnetgroup.com for more info | Follow us on social media:

Integrity

Trust

Empower

Respect

Care