



*Improving lives together*

# Learning Disability Services in Yorkshire

- > Residential Services
- > Supported Living Services



# Welcome

**Cygnets Social Care** was established in 1988. Since then we have developed a wide range of health and social care services for individuals with mental health needs, autism and learning disabilities within the UK.

Through our values of Integrity, Trust, Empower, Respect and Care we take pride in the services we offer and the outcomes we enable individuals in our care to achieve.



**Our expert and highly dedicated care team of 11,500 employees empower 7,500 individuals across 150 services** to consistently make a positive difference to their lives.



**We maintain a good relationship with our quality regulators and undergo regular inspections, with 82% of our services rated 'Good' or 'Outstanding'.**



**Click the buttons to find out more about our Learning Disability Residential Services**

## Introduction

[Our Projects](#)[Our Resident Profile](#)[Residential Services](#)[Supported Living Services](#)[Case Study](#)[Map](#)[How to Make a Referral](#)

## Contents

### Introduction

[Our Projects page](#)[4-7](#)[Our Resident Profile](#)[8](#)

### Residential Services

[Beacon House, West Yorkshire](#)[9](#)[Beckly, West Yorkshire](#)[10](#)[Dene Brook, South Yorkshire](#)[11](#)[Dove Valley Mews, South Yorkshire](#)[12](#)[Gledholt, West Yorkshire](#)[13](#)[Hawkstone, West Yorkshire](#)[14](#)[Kirkside House, West Yorkshire](#)[15](#)[Kirkside Lodge, West Yorkshire](#)[16](#)[Langdale House, West Yorkshire](#)[17](#)[Longfield House, West Yorkshire](#)[18](#)[Norcott House, West Yorkshire](#)[19](#)[Norcott Lodge, West Yorkshire](#)[20](#)[Outwood, West Yorkshire](#)[21](#)[Oxley Woodhouse, West Yorkshire](#)[22](#)[Thornfield House, West Yorkshire](#)[23](#)

### Supported Living Services

[Yorkshire Supported Living, West Yorkshire](#)[24](#)

### Case Study

[25](#)

### Map

[26](#)

### How to Make a Referral

[27](#)



# Introduction

Our priority is to ensure that people with learning disabilities enjoy the same right to a happy and fulfilled life as others. We ensure that people in our care feel safe in their environment, are understood and are able to communicate to the best of their ability. Most importantly with the right support and help we empower each individual in our care to successfully progress to a community-based service that is suitable for their needs.

Our services in Yorkshire have considerable experience and expertise in supporting individuals with a learning disability to develop independent skills and to live an active and happy life.

The services we offer in Yorkshire are, Residential and Supported Living Services.

## Our resident profile:

- > Adults from the age of 17/18+ years
- > Individuals with a primary diagnosis of learning disability accompanied with behaviours that challenge including mental illness or a forensic background
- > Individuals with a secondary diagnosis of autism, personality disorder or dementia
- > May have communication challenges
- > May have associated complex needs



17 + / 18+  
years



Mixed  
Gender



Mental Health Act  
Status: Informal



Click the buttons to find out more about our Learning Disability Residential Services

Introduction

Our Projects

Our Resident Profile

Residential Services

Supported Living Services

Case Study

Map

How to Make a Referral





# Our projects

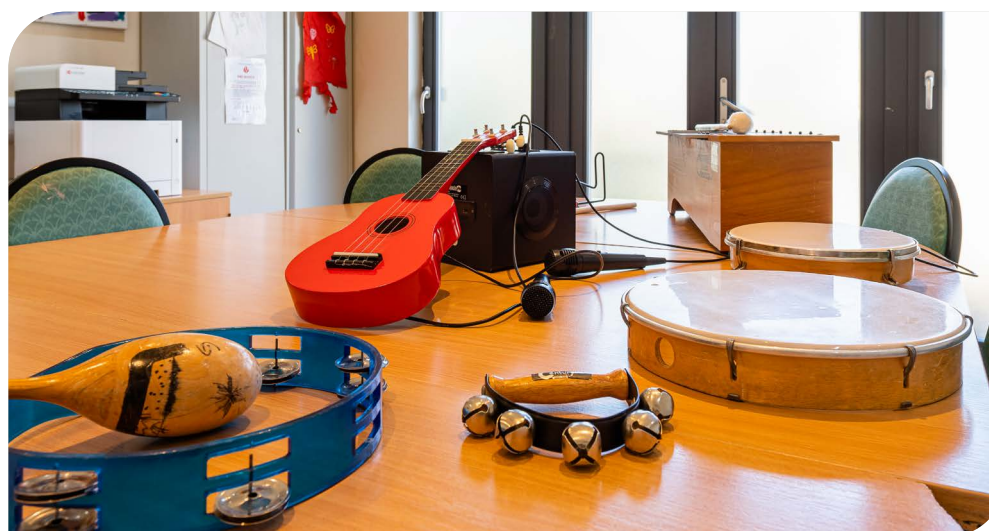
Our residents across Yorkshire have access to three fantastic community projects which have been running for over 12 years; the bakery project, the textiles project and the gardening project. Each project aims to support residents to build their portfolio of skills with a person-centred approach and provides meaningful activities with tangible outputs.

There is a real sense of community and co-production across all of the projects and they often work together to arrange parties and events for other local residents. The bakery, gardening and textiles projects all pay wages to the residents that attend, giving individuals further independence and a sense of responsibility.

In addition to the core skills individuals will learn and build upon, the projects are also a place for residents to unwind and socialise with individuals from different homes. This in turn leads to residents gaining confidence to progress in their day to day lives, please read more about our projects on [pages 5-8](#).



Click the buttons to find out more about our Learning Disability Residential Services

[Introduction](#)[Our Projects](#)[Our Resident Profile](#)[Residential Services](#)[Supported Living Services](#)[Case Study](#)[Map](#)[How to Make a Referral](#)



# The bakery project

Accessible Monday to Friday, the bakery project gives local residents an insight into working in the community. Those who attend are able to see the process of baking from start to finish, including budgeting and purchasing ingredients and of course, enjoying the bakes at the end.

The project often caters for the resident's social events, taking orders for bespoke birthday cakes which the residents take great pride in making and taking back to their service. The project allows individuals to make decisions about things they'd like to learn or bakes they'd like to try.

Minimising waste and recycling is encouraged at the project, and any left-over products are donated to a local food bank charity for those in need.



"I like making cookies..." Resident, Oxley Woodhouse

"Bakery made me a train cake for my birthday!..." Resident, Hawkstone

"I love to bake lots of delicious goodies and make loads of new friends..." Resident, Yorkshire Supported Living



Click the buttons to find out more about our Learning Disability Residential Services

[Introduction](#)

[Our Projects](#)

[Our Resident Profile](#)

[Residential Services](#)

[Supported Living Services](#)

[Case Study](#)

[Map](#)

[How to Make a Referral](#)





# The textiles project

The textiles project produces a variety of artistic pieces including stuffed animals, aprons, peg bags, softballs and pom-poms. The products created are sold to staff and family members and they even make Christmas decorations for all of the residential services in West Yorkshire.

The team work hard to empower everyone who walks through the door to achieve what they want to. They are keen to encourage individuals to reach their full potential and learn new skills, but equally happy to support residents to do the things they enjoy.

It is a friendly environment where individuals are encouraged to do their best.



Click the buttons to find out more about our Learning Disability Residential Services

[Introduction](#)

[Our Projects](#)

[Our Resident Profile](#)

[Residential Services](#)

[Supported Living Services](#)

[Case Study](#)

[Map](#)

[How to Make a Referral](#)





# The gardening project

The gardening project aims to encourage and promote the importance of working as a team whilst bringing out the best in any individual to nurture growth, both personally, and in what they plant. The gardens are set in a quiet, peaceful and private area, surrounded by trees, birds, and lots of fresh air. The project runs Monday to Friday from 9.30am – 2.00pm.

A variety of fruit and vegetables are grown, including; apples, blackberries, carrots, courgettes, grapes, onions, plums, potatoes, strawberries, sweetcorn and tomatoes. Everything that is grown is used by the residents for their own cooking needs. There are flower beds, vegetable patches, a polytunnel and individual gardening plots, all planted and maintained by the residents alongside the head gardener.

In the winter when the weather gets chilly, individuals that attend are offered the opportunity to learn some woodwork skills making planters and bird boxes. Residents who attend the gardening project also learn some basic trade skills.



Click the buttons to find out more about our Learning Disability Residential Services

[Introduction](#)

[Our Projects](#)

[Our Resident Profile](#)

[Residential Services](#)

[Supported Living Services](#)

[Case Study](#)

[Map](#)

[How to Make a Referral](#)





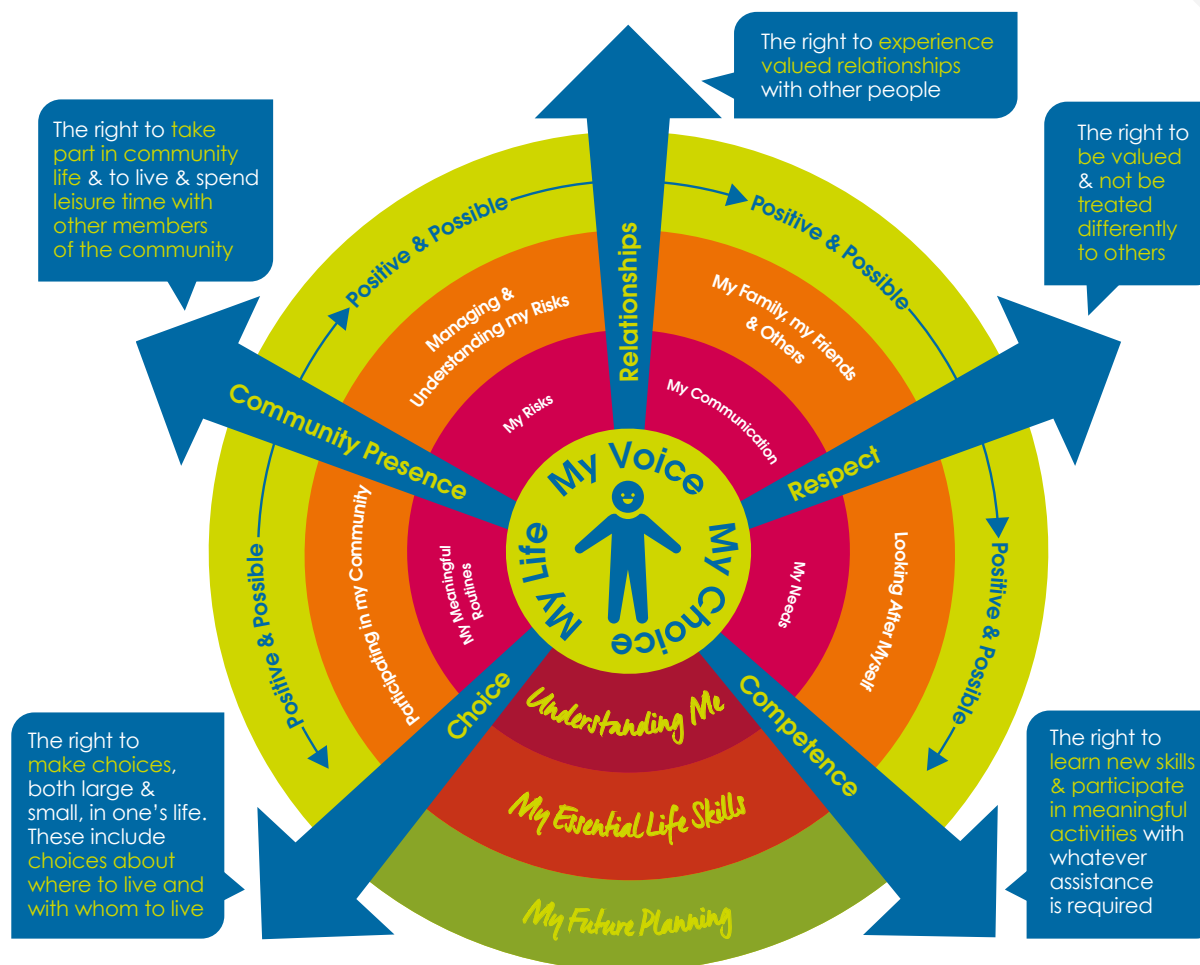
# Our Model of Support - Residential Services

At Cygnet Social Care we believe that each individual with a **learning disability** has the right to a happy and fulfilled life regardless of their level of support.

To help guide us and make sure we are all working together to achieve this we have formed **Our Model of Support for our Residential Services**. A guide that shows what we do as an organisation to support individuals with **learning disabilities**.



Click the buttons to find out more about our Learning Disability Residential Services

[Introduction](#)[Our Projects](#)[Our Resident Profile](#)[Residential Services](#)[Supported Living Services](#)[Case Study](#)[Map](#)[How to Make a Referral](#)





# Beacon House, West Yorkshire

281 Beacon Road, Wibsey, Bradford, West Yorkshire, Yorkshire & Humber BD6 3DQ

## Residential Services



18+ years



Mixed Gender



16 placements in 6 living units

**B**eacon House is a specialist residential service in West Yorkshire, a suburb of Bradford. We support individuals with learning disabilities, autism, complex needs and behaviours that may challenge.

At Beacon House we encourage and enable the residents to lead a full and happy life. We work with each individual to find out their strengths, abilities and preferences so that the care provided can be as person-centred to each individual as possible.

The service is in a great location in Wibsey, Bradford, Halifax is close by and also on the doorstep of some beautiful countryside walks. The residents are encouraged to be involved in the local community and also supported to visit the city centre which is a 15 minute bus ride away, there is no shortage of community integration.

Beacon House is split into 6 different dwellings across 4 floors enabling individuals to live in smaller groups. Each living unit has its own lounge, dining room, kitchen, bathrooms and en-suite facilities. Externally we have a large south facing garden with space for playing games and also a number of picnic tables allowing for summer entertaining.

In conjunction with the other local Cygnet residential services, we have some fantastic projects that residents can attend regularly including local bakery, horticultural projects, with on-site textile projects for residents. These projects introduce vocational and learning activities designed to give residents the opportunity to learn valuable skills and develop confidence.

Individuals may come to Beacon House for many reasons. They may be moving through their care pathway from a hospital setting or may require extra support during a difficult period in their life, or they could be on a pathway to a place of their own.

## Our community links:

- > Cafés, restaurants and gastropubs
- > Local colleges & libraries
- > Leisure and sporting facilities nearby
- > Cinema, bowling and other leisure facilities
- > Beautiful parks and countryside on the doorstep
- > Great public transport links
- > Barbers and hairdressers
- > Museums

**Close links with Waddiloves** (Bradford and Airedale Learnin Disabilities health support team)



**Specialist training** delivered to staff tailored to the needs of the residents, e.g. dementia training



**Accessible information** available to all residents



**Good transport links** to Leeds, Huddersfield, and Halifax

**Promote family involvement** as much as possible



Click the buttons to find out more about our Learning Disability Residential Services

## Introduction

## Our Projects

## Our Resident Profile

## Residential Services

Beacon House, West Yorkshire  
Beckly, West Yorkshire  
Dene Brook, South Yorkshire  
Dove Valley Mews, South Yorkshire  
Gledholt, West Yorkshire  
Hawkstone, West Yorkshire  
Kirkside House, West Yorkshire  
Kirkside Lodge, West Yorkshire  
Langdale House, West Yorkshire  
Longfield, West Yorkshire  
Norcott House, West Yorkshire  
Norcott Lodge, West Yorkshire  
Outwood, West Yorkshire  
Oxley Woodhouse, West Yorkshire  
Thornfield House, West Yorkshire

## Supported Living Services

## Case Study

## Map

## How to Make a Referral





# Beckly, West Yorkshire

56 Cooper Lane, Shelf, Halifax, West Yorkshire, Yorkshire & Humber HX3 7RG

## Residential Services



18+ years



Mixed Gender



12 placements in 3 living units

**B**eckly is a specialist residential service in Halifax, West Yorkshire, supporting individuals with learning disabilities, complex needs and behaviours that may challenge.

We encourage and enable the individuals we support to lead a full and happy life. We work with them to ensure they have more choice and control in their lives. We find out their strengths, abilities and preferences so that the care provided can be as person-centred and meaningful to each individual as possible.

The service is split into Beckly House and Beckly Lodge. **Beckly House** has 8 en-suite bedrooms, 3 of which are on the ground floor and are suitable for individuals with mobility issues. In addition they have communal living areas including a lounge, dining room, a conservatory and activity space. **Beckly Lodge** is two 2-bed units, each with their own en-suite toilets. One of the units has a shared living space for 2 individuals in a large open plan area whilst the second 2-bed unit has separate lounges for the individuals who live there. Externally there is a large garden with plenty of space for outdoor activities, sports, barbeques and parties.

Beckly is located in the village of Shelf, which is in-between the cities of Halifax and Bradford. In a great location, steeped with history, the service is close to many community facilities, fantastic nature walks and good transport links. The residents are encouraged to be involved in the local community as much or as little as they wish to be.

In conjunction with the other local Cygnet residential services, we have some fantastic projects that residents can attend regularly including bakery, textiles and horticultural work. These projects introduce vocational and learning activities designed to give residents the opportunity to learn valuable skills and develop confidence in a safe and familiar environment.



## Themed days

organised regularly, including Pride, Easter, National Tea Party



Excellent location, close to local towns and beautiful countryside



Successfully discharge individuals to their own supported accommodation



Supporting individuals to enhance their social skills



## Strong links

with local community learning disability team (CLDT)



## Our community links:

- > Cafés and restaurants
- > Local colleges & libraries
- > Beauty salons
- > Theatres and cinemas
- > Bowling and other leisure facilities
- > Beautiful parks and countryside on the doorstep
- > Great public transport links



Click the buttons to find out more about our Learning Disability Residential Services

## Introduction

## Our Projects

## Our Resident Profile

## Residential Services

Beacon House, West Yorkshire  
Beckly, West Yorkshire  
Dene Brook, South Yorkshire  
Dove Valley Mews, South Yorkshire  
Gledholt, West Yorkshire  
Hawkstone, West Yorkshire  
Kirkside House, West Yorkshire  
Kirkside Lodge, West Yorkshire  
Langdale House, West Yorkshire  
Longfield, West Yorkshire  
Norcott House, West Yorkshire  
Norcott Lodge, West Yorkshire  
Outwood, West Yorkshire  
Oxley Woodhouse, West Yorkshire  
Thornfield House, West Yorkshire

## Supported Living Services

## Case Study

## Map

## How to Make a Referral







# Dene Brook, South Yorkshire

Dalton Lane, Dalton Parva, Rotherham, South Yorkshire, Yorkshire & Humber S65 3QQ

## Residential Services



18+ years



Mixed Gender



14 placements in 7 living units

**D**ene Brook is a specialist residential service in Rotherham, South Yorkshire, supporting individuals with learning disabilities, complex needs, autism and behaviours that may challenge.

We encourage and enable the individuals we support to lead a full and happy life. We work with them to ensure they have more choice and control in their lives. We find out their strengths, abilities and preferences so that the care provided can be as person-centred and meaningful to each individual as possible.

Dene Brook is split into 8 apartments allowing individuals to live either on their own or in small groups. We have two 3-bed placements, two 2-bed placements and four 1-bed placements, one of which is located in the grounds of Dene Brook and has its own garden and front door. Each of the apartments have a lounge, kitchen and dining facilities and the shared units all have en-suite toilets with a shared bathroom. In addition we also have an activity room, laundry room and a sensory room for all residents to access. Externally we have a patio area and an extensive secure grassed garden with plenty of space for playing games/sports and a seating area allowing for summer entertaining.

Dene Brook is located in Dalton Parva, a lovely village in the suburbs of Rotherham. At the end of the road there are buses that take you direct to either Rotherham or Sheffield where there is an abundance of community facilities that you would expect from a major town or city. Locally in the village we are not short on things to do, there are local shops, pubs, cafes and some beautiful countryside. The residents are encouraged to be involved in the local community as much or as little as they wish to be.

In conjunction with the other local Cygnet residential services, we have some great projects that residents can attend regularly including bakery, gardening, and textiles projects.

## Our community links:

- Great public transport links to major local towns and cities
- Countryside walks
- Retail parks and local shops
- Close links with the local MDT team
- Regular on-site health checks
- Cinemas and bowling alleys
- Restaurants, pubs and cafés
- Local restaurants, swimming pool, cinema, social clubs



**Community activities**  
based on person-centred interests, e.g. theme parks, visiting sensory rooms



**Regular themed days and parties**



**Residents meetings take place monthly,**  
with pictorial easy read minutes displayed in the service



**Person-centred keyworker allocation**  
- staff and resident interests are matched



**Supporting residents on holidays**



Click the buttons to find out more about our Learning Disability Residential Services

[Introduction](#)

[Our Projects](#)

[Our Resident Profile](#)

[Residential Services](#)

[Beacon House, West Yorkshire](#)

[Beckly, West Yorkshire](#)

[Dene Brook, South Yorkshire](#)

[Dove Valley Mews, South Yorkshire](#)

[Gledholt, West Yorkshire](#)

[Hawkstone, West Yorkshire](#)

[Kirkside House, West Yorkshire](#)

[Kirkside Lodge, West Yorkshire](#)

[Langdale House, West Yorkshire](#)

[Longfield, West Yorkshire](#)

[Norcott House, West Yorkshire](#)

[Norcott Lodge, West Yorkshire](#)

[Outwood, West Yorkshire](#)

[Oxley Woodhouse, West Yorkshire](#)

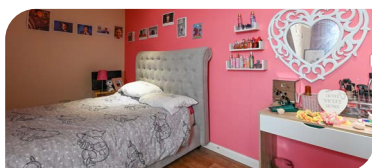
[Thornfield House, West Yorkshire](#)

[Supported Living Services](#)

[Case Study](#)

[Map](#)

[How to Make a Referral](#)





# Dove Valley Mews, South Yorkshire

75 Park Street, Wombwell, Barnsley, South Yorkshire, Yorkshire & Humber S73 0HL

## Residential Services



18+ years



Mixed Gender



5 placements in 2 living units

**D**ove Valley Mews is a residential service providing outcome focused care for adults with a learning disability, autism and associated complex needs who may have behaviours that challenge.

We encourage and enable the individuals we support to lead a full and happy life. We work with them to ensure they have more choice and control in their lives. We find out their strengths, abilities and preferences so that the care provided can be as person-centred and meaningful to each individual as possible.

Dove Valley Mews, which is based five miles away from Barnsley town centre in the suburb of Wombwell, offers modern residential accommodation comprising of two separate apartments (a three bed and a two bed) and an enclosed outdoor garden within a homely environment. All bedrooms at Dove Valley Mews are en-suite and the individuals we support are encouraged to personalise as they wish.

Promoting an individual's independence is very important at Dove Valley Mews, so we ensure that we have a robust transition plan in place so that we can focus on the needs of that individual. The team ensure that the support provided is person-centred to each resident. Everything we do is catered around their needs, whether that be going out on an excursion, visiting their families or perhaps even making their own cup of tea.

## Our community links:

- > Bowling
- > Cinemas
- > Shopping
- > Barnsley Town Centre
- > Parks
- > Barnsley Metrodome Water Park
- > The Botanical Gardens
- > Leisure Centres



Supporting individuals to devise their own activity timetable schedules



Focussed on reducing restrictive practice



Regular parties and family visits to celebrate special occasions and birthdays



"I like to sing and dance with my support staff, I also like it when they take me swimming and I splash around." Resident



Click the buttons to find out more about our Learning Disability Residential Services

## Introduction

## Our Projects

## Our Resident Profile

## Residential Services

Beacon House, West Yorkshire

Beckly, West Yorkshire

Dene Brook, South Yorkshire

Dove Valley Mews, South Yorkshire

Gledholt, West Yorkshire

Hawkstone, West Yorkshire

Kirkside House, West Yorkshire

Kirkside Lodge, West Yorkshire

Langdale House, West Yorkshire

Longfield, West Yorkshire

Norcott House, West Yorkshire

Norcott Lodge, West Yorkshire

Outwood, West Yorkshire

Oxley Woodhouse, West Yorkshire

Thornfield House, West Yorkshire

## Supported Living Services

## Case Study

## Map

## How to Make a Referral







# Gledholt, West Yorkshire

32 Greenhead Road, Gledholt, Huddersfield, West Yorkshire HD1 4EZ

## Residential Services



18+ years



Mixed Gender



9 placements in 2 living units

**Gledholt is an enhanced community residential service providing outcome focused support for adults with learning disabilities, who may have behaviours that challenge and associated complex needs.**

Gledholt is operationally a nurse-led service with both service manager and head of care being qualified nurses. We have an in-house multi-disciplinary team (MDT) who support the residents in our care throughout their journey with us. The team consists of a consultant psychologist, psychology assistant, occupational therapist, occupational therapy assistant, activity co-ordinators, nurses and speech and language therapist. We are able to meet the changing needs of our residents as they progress through their care pathway, while ensuring their safety is maintained and their independence supported.

We have a unique care plan pathway called the Visual Discharge Plan (VDP). This approach involves a collaborative process between the individual, their families, the MDT and staff team. It ensures the person is at the heart of their care and takes into account what's important to them, whilst balancing this with the clinical need. This puts the resident at the heart of their care and also ensures that discharge planning commences at the point of admission.

Gledholt is divided into two living areas, the main house and the coach house. The main house, which is split across three floors, offers seven en-suite bedrooms, communal lounges and a kitchen on each floor to enable the residents to shop for and prepare their own meals. The coach house is a two bedroom unit giving the individuals we support the option to spend time in their own space or in the main house. Externally there are beautiful gardens to the front and rear of the building with raised flower beds, outdoor seating and plenty of space for sports, games and parties.

The service is located in a bustling residential area of Huddersfield, in walking distance to an abundance of community facilities. The residents are encouraged to be involved in the local community as much or as little as they wish to be. We have great links with external agencies, including the police, the mental health enhancement team, local hospitals and many more to ensure that our residents are safe and well supported in the community.

## Our community links:

- > Cinemas
- > Local parks
- > Community groups
- > Colleges
- > Shops, cafés and restaurants
- > Sports clubs
- > Great public transport links

Residents are supported to attend local colleges for English and Maths skills



Specialist training delivered to staff tailored to the needs of the residents



Collaborative care planning with external agencies to enhance the experience of accessing the community

Residents are encouraged to cook and prepare their own lunches independently or with staff support



Click the buttons to find out more about our Learning Disability Residential Services

## Introduction

## Our Projects

## Our Resident Profile

## Residential Services

Beacon House, West Yorkshire  
Beckly, West Yorkshire  
Dene Brook, South Yorkshire  
Dove Valley Mews, South Yorkshire  
Gledholt, West Yorkshire  
Hawkstone, West Yorkshire  
Kirkside House, West Yorkshire  
Kirkside Lodge, West Yorkshire  
Langdale House, West Yorkshire  
Longfield, West Yorkshire  
Norcott House, West Yorkshire  
Norcott Lodge, West Yorkshire  
Outwood, West Yorkshire  
Oxley Woodhouse, West Yorkshire  
Thornfield House, West Yorkshire

## Supported Living Services

## Case Study

## Map

## How to Make a Referral







# Hawkstone, West Yorkshire

Shann Lane, Off Spring Garden Lane, Keighley, West Yorkshire, Yorkshire & Humber BD20 6NA

## Residential Services



18+ years



Mixed Gender



10 placements in 2 living units

**H**awkstone is a specialist residential service in Bradford, West Yorkshire, supporting individuals with learning disabilities, complex needs and behaviours that may challenge.

We encourage and enable the individuals we support to lead a full and happy life. We work with them to ensure they have more choice and control in their lives. We find out their strengths, abilities and preferences so that the care provided can be as person-centred and meaningful to each individual as possible.

Hawkstone is split into 2 separate living units, **Hawkstone House** and **Hawkstone Cottage**. Hawkstone House is set in a beautiful 19th century building that was originally the Duke of Devonshire's hunting lodge. The building is steeped in history and has a great deal of character including towers and a grand ornate entrance foyer.

**Hawkstone House** has 6 beds and numerous communal living areas including a lounge, conservatory, dining room, bathroom, kitchen and an activity room. Externally there is a large garden with a trampoline and a swing as well as a more secluded quiet part of the garden towards the rear of the grounds.

**Hawkstone Cottage** is modern and very homely with 4 en-suite bedrooms as well as a lounge, dining room, kitchen and a lovely seating area in front of the cottage surrounded by beautiful flower beds, making it a perfect location for afternoon tea.

Hawkstone is located in Keighley, which has an abundance of community facilities, fantastic nature walks and good transport links. The residents are encouraged to be involved in the local community as much or as little as they wish to be.

In conjunction with the other local Cygnet residential services, we have some great projects that residents can attend regularly including bakery, textiles and horticultural work. These projects introduce vocational and learning activities designed to give residents the opportunity to learn valuable skills and develop confidence.

## Our community links:

- > Cliffe Castle Park & Museum
- > Tarn Lake
- > Skipton Castle
- > Bolton Abbey
- > East Riddlesden Hall Trust
- > Bronte museum in Howarth
- > Vintage carriages and Railway museum
- > Keighley Bus Museum
- > Keighley & Worth Valley Steam Railway
- > Keighley Civic Centre & Police museum
- > Local Leisure Centre
- > Library
- > Local shops all within walking distance

**Monthly day trips** to Blackpool, Scarborough, Bridlington, Knowles Safari Park, The Deep in Hull, Skipton, and Shipley



**100%**

of residents say that the staff help them to do the things that are important to them



Achieved the **Dignity in Care** award

★ ★ ★ ★ ★  
Rated **'Good'**  
by the CQC



**Monthly theme nights, movie nights, karaoke nights and games night at the service**



**Supporting residents on holidays** in the UK and abroad



Click the buttons to find out more about our Learning Disability Residential Services

## Introduction

## Our Projects

## Our Resident Profile

## Residential Services

Beacon House, West Yorkshire  
Beckly, West Yorkshire  
Dene Brook, South Yorkshire  
Dove Valley Mews, South Yorkshire  
Gledholt, West Yorkshire  
Hawkstone, West Yorkshire  
Kirkside House, West Yorkshire  
Kirkside Lodge, West Yorkshire  
Langdale House, West Yorkshire  
Longfield, West Yorkshire  
Norcott House, West Yorkshire  
Norcott Lodge, West Yorkshire  
Outwood, West Yorkshire  
Oxley Woodhouse, West Yorkshire  
Thornfield House, West Yorkshire

## Supported Living Services

## Case Study

## Map

## How to Make a Referral







# Kirkside House, West Yorkshire

1 Spen Lane, Kirkstall, Leeds, West Yorkshire, Yorkshire & Humber LS5 3EJ

## Residential Services



18+ years



Mixed Gender



7 placements in 3 living units

**L**ocated in a historical area in Leeds, Kirkside House is a specialist residential service providing outcome focused care for adults with learning disabilities and associated complex needs who may have behaviours that challenge.

Person-centred planning is at the heart of everything we do and we are able to meet the changing needs of our residents as they progress through their care pathway, while ensuring their safety is maintained and their independence supported.

There are 3 living areas within Kirkside House all supporting individuals who are at different stages in their care pathway. There is a 4 bed unit for individuals to live in small groups with lounge, dining room and kitchen. The service then has a 2 bed ground floor unit, allowing 2 individuals their own space. This part of the service is suitable for individuals who may have physical/mobility issues. Finally, we have a 1 bed bespoke unit for an individual who requires 2-1 care. This unit has its own living space and its own private garden.

Externally there is a large garden which is shared with Kirkside Lodge (also a residential service located in the same grounds). There is plenty of space in the garden for individuals to participate in the horticultural project, where they grow their own vegetables, create hanging baskets, or enjoy the sensory garden and outside space.

We also host the bakery project, these two projects and a textile project are ran in conjunction with the other local Cygnet residential services. These projects introduce vocational and learning activities designed to give residents the opportunity to learn valuable skills and develop confidence in a safe and familiar environment.

We ensure we involve family or advocates in an individual's care. We have high staffing levels to ensure that we are able to meet the changing needs of the residents as they progress through their care pathway.

The service is in walking distance of community facilities including shopping centres, cafes and leisure centres. It is also only a 1 minute walk from the 800 year old Kirkstall Abbey, where the residents can visit to enjoy the surroundings, learn about the historical ruins or visit the on-site café.

## Our community links:

- > Cinemas
- > Local parks
- > Community groups
- > Shops, cafés and restaurants
- > Colleges
- > Sports clubs
- > 20 minutes to Leeds City Centre
- > Excellent transport links and local amenities



Monthly themed activity days



100% of individuals are happy with the activities they do

Community meetings residents give thoughts and feedback on the service



"Staff make me feel safe." - Resident

Good relationship with local Community Learning Disability Team (CLDT)



100% of residents stated that the staff are polite and treat them with respect



Click the buttons to find out more about our Learning Disability Residential Services

## Introduction

## Our Projects

## Our Resident Profile

## Residential Services

Beacon House, West Yorkshire

Beckly, West Yorkshire

Dene Brook, South Yorkshire

Dove Valley Mews, South Yorkshire

Gledholt, West Yorkshire

Hawkstone, West Yorkshire

Kirkside House, West Yorkshire

Kirkside Lodge, West Yorkshire

Langdale House, West Yorkshire

Longfield, West Yorkshire

Norcott House, West Yorkshire

Norcott Lodge, West Yorkshire

Outwood, West Yorkshire

Oxley Woodhouse, West Yorkshire

Thornfield House, West Yorkshire

## Supported Living Services

## Case Study

## Map

## How to Make a Referral







# Kirkside Lodge, West Yorkshire

1 Spen Lane, Kirkstall, Leeds, West Yorkshire, Yorkshire & Humber LS5 3EJ

## Residential Services



18+ years



Mixed Gender



8 placements in 4 living units

**L**ocated in a historical area in Leeds, Kirkside Lodge is a specialist residential service providing outcome focused care for adults with learning disabilities and associated complex needs who may have behaviours that challenge.

Person-centred planning is at the heart of everything we do and we are able to meet the changing needs of our residents as they progress through their care pathway, while ensuring their safety is maintained and their independence supported.

There are 4 living areas within Kirkside Lodge, a 3 bed unit, two 2 bed units and a 1 bed unit. Each unit has its own living space with lounge, dining room, kitchen and en-suite facilities enabling individuals to live as independently as they are able to.

Externally there is a large garden which is shared with Kirkside House (also a residential service located in the same grounds). There is plenty of space in the garden for individuals to participate in the horticultural project where they grow their own vegetables, create hanging baskets, enjoy the sensory garden or even just sit and enjoy the outside space.

In addition at Kirkside, we also host the bakery project, these two projects and a textile project are ran in conjunction with the other local Cygnet residential services. These projects introduce vocational and learning activities designed to give residents the opportunity to learn valuable skills and develop confidence in a safe and familiar environment.

We ensure we involve family or advocates in an individual's care. We have high staffing levels at Kirkside Lodge, this ensures that we are able to meet the changing needs of the residents as they progress through their care pathway.

The service is located in a historical residential area of Leeds, in walking distance to an abundance of community facilities including shopping centres, cafes and leisure centres. It is also only a 1 minute walk from the 800 year old Kirkstall Abbey, where the residents can visit to enjoy the surroundings, learn about the historical ruins or visit the on-site café. The residents are encouraged to be involved in the local community as much or as little as they wish to be.

## Our community links:

- > Cinemas
- > Local parks
- > Community groups
- > Colleges
- > Shops, cafés and restaurants
- > Sports clubs
- > 20 minutes to Leeds City Centre
- > Excellent transport links and local amenities



**Good relationship with local CLDT**

**Supporting individuals**

to enhance their social skills



## Horticultural projects

– hosted in the large garden where individuals learn how to grow produce and taking care of animals and grow produce



**Monthly themed activity days**



**Focussed on reducing restrictive practice**



Click the buttons to find out more about our Learning Disability Residential Services

## Introduction

## Our Projects

## Our Resident Profile

## Residential Services

Beacon House, West Yorkshire  
Beckly, West Yorkshire  
Dene Brook, South Yorkshire  
Dove Valley Mews, South Yorkshire  
Gledholt, West Yorkshire  
Hawkstone, West Yorkshire  
Kirkside House, West Yorkshire  
Kirkside Lodge, West Yorkshire  
Langdale House, West Yorkshire  
Longfield, West Yorkshire  
Norcott House, West Yorkshire  
Norcott Lodge, West Yorkshire  
Outwood, West Yorkshire  
Oxley Woodhouse, West Yorkshire  
Thornfield House, West Yorkshire

## Supported Living Services

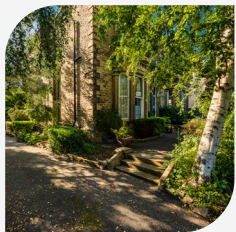
## Case Study

## Map

## How to Make a Referral







# Langdale House, West Yorkshire

56 Gledholt Road, Huddersfield, West Yorkshire, Yorkshire & Humber HD1 4HR

## Residential Services



16+ years



Mixed Gender



8 placements

**Langdale House is a specialist residential service supporting individuals with learning disabilities, complex needs and behaviours that may challenge in Huddersfield, West Yorkshire.**

Langdale House accommodates up to eight residents and offers spacious communal areas, a dedicated activity room and an enclosed outdoor garden within a homely family-style environment.

The service is in a central location opposite a popular community park. Just a 10 minute walk into Huddersfield town centre and with a bus stop outside the house with transport links to all major cities, there is no shortage of community integration.

We believe that it is essential for individual's well-being to have purpose in their day-to-day life and to learn new skills. We have established different work projects to introduce vocational and learning activities where the individuals we support can learn valuable skills and develop confidence.

Ongoing assessments enable us to meet the changing needs of residents as they progress through their care pathway while ensuring their safety is maintained and their independence supported. Regular review meetings involving the resident, their family and professionals are held to review outcomes, set new goals and re-assess support levels as individuals' progress.

The management and staff team have comprehensive training, including all mandatory training and bespoke training specific to the needs of the residents.

Individuals come to Langdale House for different reasons; they may require more support than can be provided in a supported living setting or they may be moving along their care pathway from a hospital placement. Whatever the reason, the team can offer specialist input based on individual need to deliver flexible and effective support.

## Our community links:

- > Local cafés, restaurants and pubs
- > Local colleges & libraries
- > Huddersfield town centre –shops, cinema, museums
- > Huddersfield train station with good links to Leeds and Bradford
- > Greenhead Park offers a café, tennis courts, a pond and garden area and hosts regular festivals

**Person-centred**  
meal planning, including  
shopping and cooking



**10 mins from**  
train station with  
rail links to major cities



**Monthly themed**  
parties including  
different foods and  
decorations to match  
the theme selected by  
the residents

**Excellent location**  
opposite a thriving park  
that hosts regular events  
including food and  
film festivals



**Person-centred**  
recruitment staff  
and residents interests  
are matched



Click the buttons to find out more about our Learning Disability Residential Services

[Introduction](#)

[Our Projects](#)

[Our Resident Profile](#)

[Residential Services](#)

[Beacon House, West Yorkshire](#)

[Beckly, West Yorkshire](#)

[Dene Brook, South Yorkshire](#)

[Dove Valley Mews, South Yorkshire](#)

[Gledholt, West Yorkshire](#)

[Hawkstone, West Yorkshire](#)

[Kirkside House, West Yorkshire](#)

[Kirkside Lodge, West Yorkshire](#)

[Langdale House, West Yorkshire](#)

[Longfield, West Yorkshire](#)

[Norcott House, West Yorkshire](#)

[Norcott Lodge, West Yorkshire](#)

[Outwood, West Yorkshire](#)

[Oxley Woodhouse, West Yorkshire](#)

[Thornfield House, West Yorkshire](#)

[Supported Living Services](#)

[Case Study](#)

[Map](#)

[How to Make a Referral](#)





# Longfield House, West Yorkshire

Oakleigh Road, Clayton, Bradford, West Yorkshire, Yorkshire & Humber BD14 6NP

## Residential Services



18+ years



Mixed Gender



9 placements in 5 living units

**L**ocated in the friendly village of Clayton in the suburbs of Bradford, Longfield House is a specialist residential service providing outcome focused care for adults with learning disabilities and associated complex needs who may have behaviours that challenge.

Person-centred planning is at the heart of everything we do and we are able to meet the changing needs of our residents as they progress through their care pathway, while ensuring their safety is maintained and their independence supported.

Longfield House consists of 5 different living units, a 5 bed unit and 4 single occupancy flats. The 5 bed unit has communal living spaces with lounge, dining room and kitchen and each resident has their own en-suite facilities. There are then 4 individual flats, one in the main house and 3 in the coach house. These provide the opportunity for individuals to be more independent and live in their space. The flats are also able to be used to support those who require extra support who find it difficult to share space with others. Externally there is a courtyard and a garden with plenty of space for individuals to have BBQ's, garden parties or even just sit and enjoy the outside space.

The service is located on the outskirts of Bradford and has fantastic public transport links into Bradford and Halifax. In addition to the community facilities in the local towns and cities there is also an abundance of community facilities nearby in the village. The residents are encouraged to be involved in the local community as much or as little as they wish to be and there is no shortage of places to visit within walking distance too including parks, farms, pubs and cafés.

In conjunction with the other local Cygnet residential services, we have some great projects that residents can attend regularly including bakery, textiles, horticultural and education. These projects introduce vocational and learning activities designed to give residents the opportunity to learn valuable skills and develop confidence.

## Our community links:

- > Cinemas
- > Local parks
- > Colleges
- > Shops, cafés and restaurants
- > Sports clubs
- > Great public transport links
- > Excellent local amenities
- > Community groups, including some for individuals with learning disabilities



Individuals are supported to attend **social clubs and groups** including some specifically for people with learning disabilities



**Specialist training** delivered to staff tailored to the needs of the residents



Individuals can be supported to attend **local colleges** should they wish to



**Homely environment** with 24/7 support



Supporting individuals to express their views and **be involved in making decisions about their care**



Click the buttons to find out more about our Learning Disability Residential Services

## Introduction

## Our Projects

## Our Resident Profile

## Residential Services

Beacon House, West Yorkshire  
Beckly, West Yorkshire  
Dene Brook, South Yorkshire  
Dove Valley Mews, South Yorkshire  
Gledholt, West Yorkshire  
Hawkstone, West Yorkshire  
Kirkside House, West Yorkshire  
Kirkside Lodge, West Yorkshire  
Langdale House, West Yorkshire  
Longfield, West Yorkshire  
Norcott House, West Yorkshire  
Norcott Lodge, West Yorkshire  
Outwood, West Yorkshire  
Oxley Woodhouse, West Yorkshire  
Thornfield House, West Yorkshire

## Supported Living Services

## Case Study

## Map

## How to Make a Referral







# Norcott House, West Yorkshire

75 Leeds Road, Liversedge, West Yorkshire, Yorkshire & Humber WF15 6JA

## Residential Services



18+ years



Mixed Gender



11 placements in 4 living units

**L**ocated in the suburbs of Liversedge in West Yorkshire, Norcott House is a specialist residential service providing outcome focused care for adults with learning disabilities and associated complex needs who may have behaviours that challenge.

Person-centred planning is at the heart of everything we do and we are able to meet the changing needs of our residents as they progress through their care pathway, while ensuring their safety is maintained and their independence supported.

Norcott House is split into 4 different living units, a 4 bed unit, and 3 bed unit and two 2 bed units. Each unit has its own living space with lounge, dining room, kitchen and en-suite facilities to enable to individuals to live as independently as they are able to. Externally there is a garden with plenty of space for individuals to have BBQ's, garden parties or even just sit and enjoy the outside space.

The service is located in-between Bradford, Leeds and Huddersfield, so with fantastic public transport links there is an abundance of community facilities including shopping centres, cinemas and leisure centres. The residents are encouraged to be involved in the local community as much or as little as they wish to be and there is no shortage of places to visit within walking distance too including parks, pubs and cafés.

In conjunction with the other local Cygnet residential services, we have some great projects that residents can attend regularly including bakery, textiles and gardening work. These projects introduce vocational and learning activities designed to give residents the opportunity to learn valuable skills and develop confidence.

## Our community links:

- > Cinemas
- > Local parks
- > Community groups
- > Colleges
- > Shops, cafés and restaurants
- > Sports clubs
- > Great public transport links to Huddersfield, Leeds, Bradford and Wakefield
- > Excellent local amenities



**Good relationship** with the Community Learning Disability Team (CLDT)

**People's Council Involvement**



**Accessible information available to all residents**

**Homely environment** with 24/7 support



Click the buttons to find out more about our Learning Disability Residential Services

## Introduction

## Our Projects

## Our Resident Profile

## Residential Services

Beacon House, West Yorkshire  
Beckly, West Yorkshire  
Dene Brook, South Yorkshire  
Dove Valley Mews, South Yorkshire  
Gledholt, West Yorkshire  
Hawkstone, West Yorkshire  
Kirkside House, West Yorkshire  
Kirkside Lodge, West Yorkshire  
Langdale House, West Yorkshire  
Longfield, West Yorkshire  
Norcott House, West Yorkshire  
Norcott Lodge, West Yorkshire  
Outwood, West Yorkshire  
Oxley Woodhouse, West Yorkshire  
Thornfield House, West Yorkshire

## Supported Living Services

## Case Study

## Map

## How to Make a Referral





# Norcott Lodge, West Yorkshire

75 Leeds Road, Liversedge, West Yorkshire, Yorkshire & Humber WF15 6JA

## Residential Services



18+ years



Mixed Gender



9 placements in 4 living units

**L**ocated in the suburbs of Liversedge in West Yorkshire, Norcott Lodge is a specialist residential service providing outcome focused care for adults with learning disabilities and associated complex needs who may have behaviours that challenge.

Person-centred planning is at the heart of everything we do and we are able to meet the changing needs of our residents as they progress through their care pathway, while ensuring their safety is maintained and their independence supported.

Norcott Lodge is in a modern building and is split into 4 different living units. We have a 4 bed and and 3 bed unit that allows individuals to live together in small groups. Each unit has its own communal living space, kitchen diner, bathroom and en-suite toilets. In addition we also have 2 self-contained apartments for individuals with more complex needs who need extra 1-1 support. Externally there is a large garden with seating areas, space for outdoor activities and BBQs and parties.

The service is located in-between Bradford, Leeds and Huddersfield, so with fantastic public transport links there is an abundance of community facilities including shopping centres, cinemas and leisure centres. The residents are encouraged to be involved in the local community as much or as little as they wish to be and there is no shortage of places to visit within walking distance too including parks, pubs and cafés.

In conjunction with the other local Cygnet residential services, we have some great projects that residents can attend regularly including bakery, textiles, horticultural and an education centre. These projects introduce vocational and learning activities designed to give residents the opportunity to learn valuable skills and develop confidence.



**Focus on reducing restrictive practice**

**Strong links with the Community Learning Disability Team (CLDT)**



**Homely environment with 24/7 support**

**Staff support residents on holidays and day trips**



**Support individuals in voluntary work placements**



**Regular parties to celebrate cultural celebrations - karaoke is always a favourite**



## Our community links:

- > Cinemas
- > Bowling
- > Local parks
- > Community groups
- > Colleges
- > Country Parks
- > Shops, cafés and restaurants
- > Sports clubs
- > Discos
- > Great public transport links to Huddersfield, Bradford, Wakefield and Leeds
- > Excellent local amenities



**Click the buttons to find out more about our Learning Disability Residential Services**

### Introduction

### Our Projects

### Our Resident Profile

### Residential Services

Beacon House, West Yorkshire  
Beckly, West Yorkshire  
Dene Brook, South Yorkshire  
Dove Valley Mews, South Yorkshire  
Gledholt, West Yorkshire  
Hawkstone, West Yorkshire  
Kirkside House, West Yorkshire  
Kirkside Lodge, West Yorkshire  
Langdale House, West Yorkshire  
Longfield, West Yorkshire  
Norcott House, West Yorkshire  
Norcott Lodge, West Yorkshire  
Outwood, West Yorkshire  
Oxley Woodhouse, West Yorkshire  
Thornfield House, West Yorkshire

### Supported Living Services

### Case Study

### Map

### How to Make a Referral







# Outwood, West Yorkshire

12 Outwood Lane, Horsforth, West Yorkshire, Yorkshire & Humber LS18 4JA

## Residential Services



18+ years



Mixed Gender



10 placements in 3 living units

**L**ocated in Horsforth, a charming village in the suburbs of Leeds, Outwood is a specialist residential service for adults. We provide outcome focused care for individuals with learning disabilities and associated complex needs who may have behaviours that challenge.

We encourage and enable the individuals we support to lead a full and happy life. We work with them to ensure they have more choice and control in their lives. We find out their strengths, abilities and preferences so that the care provided can be as person-centred and meaningful to each individual as possible.

Outwood consists of an 8 bed unit and two 1 bed single occupancy flats. The main unit has 8 en-suite bedrooms with 3 large communal lounges, a kitchen and dining room. The two flats are both self-contained for individuals to live independently in their own space with staff support. Externally there is a large garden which has plenty of space for individuals to participate in sports and games or just enjoying the outside space.

We ensure we involve family or advocates in an individual's care. We have high staffing levels at Outwood, this ensures that we are able to meet the changing needs of the residents as they progress through their care pathway.

The service is in a great location enabling the residents to benefit from excellent community facilities including shopping centres, cinemas, pubs & cafes. The residents are encouraged to be involved in the local community as much or as little as they wish to be.

In conjunction with the other local Cygnet residential services, we have some fantastic projects that residents can attend regularly including bakery, textiles and horticultural work. These projects introduce vocational and learning activities designed to give residents the opportunity to learn valuable skills and develop confidence in a safe and familiar environment.

## Our community links:

- > Cinemas
- > Local parks
- > Community groups
- > Colleges
- > Shops, cafés and restaurants
- > Bowling
- > Short bus ride to Leeds City Centre
- > Excellent transport links and local amenities
- > Day services

Supporting individuals to enhance their social skills and attend day services



Attending galas and other community events at Kirkstall Abbey



Supporting individuals to attend local colleges



Supporting individuals to gain voluntary work in local charity shops



Click the buttons to find out more about our Learning Disability Residential Services

Introduction

Our Projects

Our Resident Profile

Residential Services

Beacon House, West Yorkshire

Beckly, West Yorkshire

Dene Brook, South Yorkshire

Dove Valley Mews, South Yorkshire

Gledholt, West Yorkshire

Hawkstone, West Yorkshire

Kirkside House, West Yorkshire

Kirkside Lodge, West Yorkshire

Langdale House, West Yorkshire

Longfield, West Yorkshire

Norcott House, West Yorkshire

Norcott Lodge, West Yorkshire

Outwood, West Yorkshire

Oxley Woodhouse, West Yorkshire

Thornfield House, West Yorkshire

Supported Living Services

Case Study

Map

How to Make a Referral





# Oxley Woodhouse, West Yorkshire

Woodhouse Hill, Huddersfield, West Yorkshire, Yorkshire & Humber HD2 1DH

## Residential Services



18+ years



Mixed Gender



17 placements in 7 living units

**Oxley Woodhouse is a specialist residential service in Huddersfield, West Yorkshire, supporting individuals with learning disabilities, complex needs and behaviours that may challenge.**

We encourage and enable the individuals we support to lead a full and happy life. We work with them to ensure they have more choice and control in their lives. We find out their strengths, abilities and preferences so that the care provided can be as person-centred and meaningful to each individual as possible.

Oxley Woodhouse is set in a beautiful 19th-century building that is steeped in character and history. The service is split into 7 smaller living areas. The main house has two 5-bed units and a male only 3-bed unit. Each unit has its own lounge, kitchen and dining space as well as en-suite facilities. One of the 5-bed units has a large arts and crafts room whilst the other has a cinema room for all residents to access and enjoy.

Additionally in the Lodge, there are 4 single occupancy flats. These flats are suitable for individuals with more challenging behaviour and require additional staff support. Again, each flat has its own lounge, dining room, kitchen and en-suite facilities.

Some of our bedrooms that are located on the ground floor are suitable for individuals who have mobility issues and perhaps require a wheelchair. Externally there is a large garden with enough space for individuals to mix and have BBQ's or to have their own time enjoying the outdoor space.

In conjunction with the other local Cygnet residential services, we have some great projects that residents can attend regularly including bakery, textiles and gardening. In addition to that, in the Lodge we have the education centre, providing AQA accredited courses for individuals from Oxley Woodhouse and their peers from other local services.

### Horticultural projects

– hosted in the large garden where individuals learn how to take care of animals and grow produce



**Textiles project – giving individuals the opportunity to learn to sew and create new things whilst earning money each week**



### Bakery project –

Individuals are taught how to make cakes and other sweet treats, whilst also learning about the safety aspect of a kitchen



**Easy read and other accessible information available to all residents**



**Person-centred recruitment – residents are involved in the interview process**



## Our community links:

- > Great public transport links to major local towns and cities
- > Canals walks
- > Retail parks and local shops
- > Cinemas
- > Bowling alleys
- > Restaurants, pubs and cafés



Click the buttons to find out more about our Learning Disability Residential Services

### Introduction

### Our Projects

### Our Resident Profile

### Residential Services

Beacon House, West Yorkshire  
Beckly, West Yorkshire  
Dene Brook, South Yorkshire  
Dove Valley Mews, South Yorkshire  
Gledholt, West Yorkshire  
Hawkstone, West Yorkshire  
Kirkside House, West Yorkshire  
Kirkside Lodge, West Yorkshire  
Langdale House, West Yorkshire  
Longfield, West Yorkshire  
Norcott House, West Yorkshire  
Norcott Lodge, West Yorkshire  
Outwood, West Yorkshire  
Oxley Woodhouse, West Yorkshire  
Thornfield House, West Yorkshire

### Supported Living Services

### Case Study

### Map

### How to Make a Referral







# Thornfield House, West Yorkshire

261 Highfield Road, Idle, Bradford, West Yorkshire, Yorkshire & Humber BD10 8QY

## Residential Services



18+ years



Mixed Gender



7 placements

**Thornfield House is a specialist residential service supporting individuals with learning disabilities, complex needs and behaviours that may challenge in Bradford, West Yorkshire.**

Thornfield House supports 7 individuals and offers spacious communal areas including a lounge, dining room, kitchen, and a large activity / cinema room. Externally we have beautiful gardens to the front and the rear of the building which feature, plenty of space for outdoor games, bbq, seating area and a sensory room.

Located in the suburbs of Idle in Bradford, the home is within close proximity to local services and amenities, including major transport links. The residents not only can access local towns and cities but we are very close to the beautiful Yorkshire countryside.

We believe that it is essential for individual's well-being to have purpose in their day-to-day life and to learn new skills. We have established different work projects to introduce vocational and learning activities where the individuals we support can learn valuable life skills and develop confidence.

Ongoing assessments enable us to meet the changing needs of individuals as they progress through their care pathway while ensuring their safety is maintained and their independence supported. Regular review meetings involving the individuals, their family and professionals are held to review outcomes, set new goals and re-assess support levels as individuals' progress.

The management and staff team have comprehensive training, including all mandatory training and bespoke training specific to the needs of the residents.

Individuals come to Thornfield House for different reasons; they may require more support than can be provided in a supported living setting or they may be moving along their care pathway from a hospital placement. Whatever the reason, the team can offer specialist input based on individual need to deliver flexible and effective support.

★ ★ ★ ★ ★  
Rated 'Good'  
with the CQC



Great local  
transport  
links into  
Bradford  
and Shipley



In house activity leads  
ensuring individuals receive  
person-centred and meaningful activities



Monthly  
house  
meetings



Easy read and  
other accessible  
information available  
to all residents



## Our community links:

- Local cafés, restaurants and pubs
- Local colleges, gyms and libraries
- Bradford and Shipley town centre – shops, cinema, museums
- Local parks including Otley Chevin and Yearndon Tarn



Click the buttons to find out more about our Learning Disability Residential Services

## Introduction

## Our Projects

## Our Resident Profile

## Residential Services

Beacon House, West Yorkshire
Beckly, West Yorkshire
Dene Brook, South Yorkshire
Dove Valley Mews, South Yorkshire
Gledholt, West Yorkshire
Hawkstone, West Yorkshire
Kirkside House, West Yorkshire
Kirkside Lodge, West Yorkshire
Langdale House, West Yorkshire
Longfield, West Yorkshire
Norcott House, West Yorkshire
Norcott Lodge, West Yorkshire
Outwood, West Yorkshire
Oxley Woodhouse, West Yorkshire
Thornfield House, West Yorkshire
Supported Living Services
Case Study
Map
How to Make a Referral





# Supported Living in Huddersfield (Ashfield)

Registered address: Oxley Woodhouse, Woodhouse Hill, Huddersfield, West Yorkshire HD2 1DH

## Supported Living Services



18+ years



Male or female



6 tenancies

**W**e know how important it is for individuals to have the right support so they can live the life they want to live.

We support individuals with learning disabilities, autism, mental health needs and behaviours that challenge. This specialist service supports individuals who may have been previously detained within a hospital setting and are ready for a step-down placement within the local community.

Individuals are supported to hold their own tenancy agreement with a registered housing association. Individuals who are interested in living here may have previously been detained within a hospital setting and are ready for a step-down placement within the local community.

Situated in the heart of the community in Huddersfield the service has 6 tenancies in 3 separate living areas, with their own outdoor space and good transport links to community facilities.

Each tenant is allocated an experienced and consistent staff team and training is bespoke to individual support needs which enables tenants to live as independently and safely as possible.

**Helping individuals to build relationships and access whatever community activities they would like to take part in**



**Providing person-centred practical help for individuals**

- such as training and support on how to manage their home, their money, gardening, housework and healthy living



**Working with individuals to find out their strengths, abilities and references**

**We get to know them, their families, carers advocates and other people who are important to them and their care and support**



## Our resident profile:

- > Diagnosis of learning disability and/or autism
- > May have associated mental health needs
- > Behaviours that may challenge
- > Communication challenges



Click the buttons to find out more about our Learning Disability Residential Services

[Introduction](#)

[Our Projects](#)

[Our Resident Profile](#)

[Residential Services](#)

[Supported Living Services](#)

[Supported Living in Huddersfield \(Ashfield\), West Yorkshire](#)

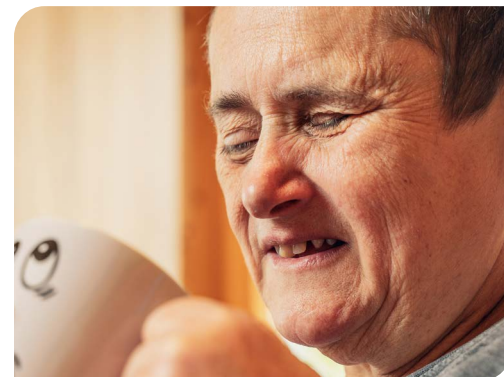
[Supported Living in Huddersfield \(Glenclyffe\), West Yorkshire](#)

[Supported Living in Leeds, West Yorkshire](#)

[Case Study](#)

[Map](#)

[How to Make a Referral](#)







# Supported Living in Huddersfield (Gledcliffe)

Registered address: Oxley Woodhouse, Woodhouse Hill, Huddersfield, West Yorkshire HD2 1DH

## Supported Living Services



18+ years



Male or female



6 tenancies

**We** know how important it is for individuals to have the right support so they can live the life they want to live.

We support individuals with learning disabilities, autism, mental health needs and behaviours that challenge. This specialist service supports individuals who may have been previously detained within a hospital setting and are ready for a step-down placement with in the local community.

Individuals are supported to hold their own tenancy agreement with a registered housing association. Individuals who are interested in living here may have previously been detained within a hospital setting and are ready for a step-down placement within the local community.

Situated in the heart of the community in Huddersfield the service has 6 tenancies in 2 separate living areas, with their own outdoor space and good transport links to community facilities.

Each tenant is allocated an experienced and consistent staff team and training is bespoke to individual support needs which enables tenants to live as independently and safely as possible.

## Our resident profile:

- > Diagnosis of learning disability and/or autism
- > May have associated mental health needs
- > Behaviours that may challenge
- > Communication challenges



**Helping individuals to build relationships and access whatever community activities they would like to take part in**



**Providing person-centred practical help for individuals**

- such as training and support on how to manage their home, their money, gardening, housework and healthy living



**Working with individuals to find out their strengths, abilities and references**

**We get to know them**, their families, carers advocates and other people who are important to them and their care and support



Click the buttons to find out more about our Learning Disability Residential Services

[Introduction](#)

[Our Projects](#)

[Our Resident Profile](#)

[Residential Services](#)

[Supported Living Services](#)

[Supported Living in Huddersfield \(Ashfield\), West Yorkshire](#)

[Supported Living in Huddersfield \(Glencliffe\), West Yorkshire](#)

[Supported Living in Leeds, West Yorkshire](#)

[Case Study](#)

[Map](#)

[How to Make a Referral](#)





# Supported Living in Leeds

Registered address: Oxley Woodhouse, Woodhouse Hill, Huddersfield, West Yorkshire HD2 1DH

## Supported Living Services



18+ years



Male or female



18 tenancies

**We** know how important it is for individuals to have the right support so they can live the life they want to live.

We support individuals with learning disabilities, autism, mental health needs and behaviours that challenge. This specialist service supports individuals who may have been previously detained within a hospital setting and are ready for a step-down placement with in the local community.

Individuals are supported to hold their own tenancy agreement with a registered housing association. Individuals who are interested in living here may have previously been detained within a hospital setting and are ready for a step-down placement within the local community.

Situated in the heart of the community in Leeds, the service has 14 single occupancy apartments and 4 single occupancy bungalows, with their own outdoor space and good transport links to community facilities.

Offering experienced, trained staff twenty-four hours a day, the service benefits from a shared core staffing team.

Each tenant is allocated an experienced and consistent staff team and training is bespoke to individual support needs which enables tenants to live as independently and safely as possible.



**Helping individuals to build relationships and access whatever community activities they would like to take part in**



**Providing person-centred practical help for individuals**

- such as training and support on how to manage their home, their money, gardening, housework and healthy living



**Working with individuals to find out their strengths, abilities and references**

**We get to know them, their families, carers advocates and other people who are important to them and their care and support**



## Our resident profile:

- Diagnosis of learning disability and/or autism
- May have associated mental health needs
- Behaviours that may challenge
- Communication challenges



Click the buttons to find out more about our Learning Disability Residential Services

[Introduction](#)

[Our Projects](#)

[Our Resident Profile](#)

[Residential Services](#)

[Supported Living Services](#)

[Supported Living in Huddersfield \(Ashfield\), West Yorkshire](#)

[Supported Living in Huddersfield \(Glenclyffe\), West Yorkshire](#)

[Supported Living in Leeds, West Yorkshire](#)

[Case Study](#)

[Map](#)

[How to Make a Referral](#)





# Daniel's\* Case Study

## Langdale House, West Yorkshire

Specialist residential service supporting individuals with learning disabilities, complex needs and behaviours that may challenge



Click the buttons to find out more about our Learning Disability Residential Services

[Introduction](#)
[Our Projects](#)
[Our Resident Profile](#)
[Residential Services](#)
[Supported Living Services](#)
[Case Study](#)
[Map](#)
[How to Make a Referral](#)

### Daniel's\* history

Prior to Daniel's admission to Langdale House, he was living at his family home. Every aspect of his life was planned and structured and any deviation, no matter how mild, would immediately cause anxieties and heightened behaviours. As a result, he would regularly become physically violent.

The family relationships gradually became strained and the frequency of behaviours increased. Daniel was causing damage to the family home and self-injuring, the family felt they were at crisis point and sought alternative care.



### When Daniel came to us

When Daniel moved to Langdale House, he struggled with the changes of moving from his previous routine at home. This resulted in him being violent to staff during periods of heightened anxiety, this was a frequent occurrence.

At first, Daniel would not use the service's vehicle, this was due to one of his major triggers being road signs. He would spend a large amount of time planning his routes. This had an impact on Daniel, it meant he couldn't go on holiday as he needed to be within walking distance of a train station.

Another significant trigger for him was his diet. When he joined us he would only eat branded foods, prepared in a certain way, so the consistency, texture and taste remained as similar to him as possible. Under no circumstances would he be anywhere near any fruit or vegetables.

Daniel avoided any daily living tasks including tidying his room and doing the laundry. Any attempts around education would last only minutes before he would tell staff to go away as he found education to be pointless and repetitive.

### Daniel's care

At Langdale House, we believe that it is essential for individual's wellbeing to have purpose in their day-to-day life and to learn new skills. Our staff have a variety of bespoke training to meet the needs of the individuals we support and regular review meetings involving the resident, their family and professionals are held. Outcomes are reviewed, new goals are set and as they progress, their support levels are re-assessed.

The team at Langdale House used a consistent, staged desensitisation plan to allow Daniel to build confidence with the things he struggled with. With staff support he progressed to be able to use cars, taxis and buses. The staff learnt of his passion for Christmas so looked into a trip to Lapland to see the 'Real Father Christmas'. By encouraging him to be involved in every part of the planning, including a short practise flight, he successfully visited Lapland.

Again by using staged desensitisation, the team were able to teach Daniel additional coping strategies, which means he can now enter the kitchen with foods in sight that previously would have prevented him from entering. He has also begun to make quite a number of his own meals with staff support.

Cygnat Health Care run an education project at nearby Oxley Woodhouse, offering ASDAN accredited courses. The team adapted the programme to fit Daniel's needs and he now has the education project as part of his weekly activity planner, travels there in traffic on the route that he chooses, and is happy going to learn.

### Daniel today

Daniel remains settled within Langdale House and is continuing to progress using the strategies that have proved effective. Although some structure remains day to day, new activities have been and continue to be introduced on a gradual basis.

He continues to attend the education project and has recently increased to two sessions per week. With consistency and a positive encouraging approach, he will now engage in helping staff with daily living tasks. His parents visit weekly and are always pleased to see the progression Daniel continues to make.

\*Name has been changed to protect his identity

# Map | Our specialist services by region

## Residential Services

### 1 Beacon House

281 Beacon Road, Wibsey, Bradford, West Yorkshire, Yorkshire & Humber BD6 3DQ  
T: **01274 501681**

### 2 Beckly

56 Cooper Lane, Shelf, Halifax, West Yorkshire, Yorkshire & Humber HX3 7RG  
T: **01274 606350**

### 3 Dene Brook

Dalton Road, Dalton Parva, Rotherham, South Yorkshire, Yorkshire & Humber S65 3QQ  
T: **01709 855029**

### 4 Dove Valley Mews

75 Park Street, Wombwell, Barnsley, South Yorkshire, Yorkshire & Humber S73 0HL  
T: **01226 448770**

### 5 Gledholt

32 Greenhead Road, Huddersfield, Yorkshire & Humber HD1 4EZ  
T: **01484 507810**

### 6 Hawkstone

Shann Lane, Off Spring Garden Lane, Keighley, West Yorkshire, Yorkshire & Humber BD20 6NA  
T: **01535 288470**

### 7 Kirkside House

1 Spenn Lane, Kirkstall, Leeds, West Yorkshire, Yorkshire & Humber LS5 3EJ  
T: **0113 278 4131**

### 8 Kirkside Lodge

1 Spenn Lane, Kirkstall, Leeds, West Yorkshire, Yorkshire & Humber LS5 3EJ  
T: **0113 278 6834**

### 9 Langdale House

56 Gledholt Road, Huddersfield, West Yorkshire, Yorkshire & Humber HD1 4HR  
T: **01484 429226**

### 10 Longfield House

Oakleigh Road, Clayton, Bradford, West Yorkshire, Yorkshire & Humber BD14 6NP  
T: **01274 882086**

### 11 Norcott House

75 Leeds Road, Liversedge, West Yorkshire, Yorkshire & Humber WF15 6JA  
T: **01924 409 100**

### 12 Norcott Lodge

75 Leeds Road, Liversedge, West Yorkshire, Yorkshire & Humber WF15 6JA  
T: **01924 408 505**

### 13 Outwood

12 Outwood Lane, Horsforth, West Yorkshire, Yorkshire & Humber LS18 4JA  
T: **0113 258 6144**

### 14 Oxley Woodhouse

Woodhouse Hill, Fartown, Huddersfield, West Yorkshire, Yorkshire & Humber HD2 1DH  
T: **01484 248143**

### 15 Thornfield House

261 Highfield Road, Idle, Bradford, West Yorkshire, Yorkshire & Humber BD10 8QY  
T: **01274 414165**

## Supported Living Services

### 16 Supported Living In Huddersfield (Ashfield)

Registered address: Yorkshire Supported Living, Oxley Woodhouse, Woodhouse Hill, Huddersfield, West Yorkshire HD2 1DH  
T: **01484 427580**

### 17 Supported Living In Huddersfield (Glencliffe)

Registered address: Yorkshire Supported Living, Oxley Woodhouse, Woodhouse Hill, Huddersfield, West Yorkshire HD2 1DH  
T: **01484 427580**

### 18 Supported Living In Leeds

Registered address: Yorkshire Supported Living, Oxley Woodhouse, Woodhouse Hill, Huddersfield, West Yorkshire HD2 1DH  
T: **01484 427580**



Click the buttons to find out more about our Learning Disability Residential Services

Introduction

Our Projects

Our Resident Profile

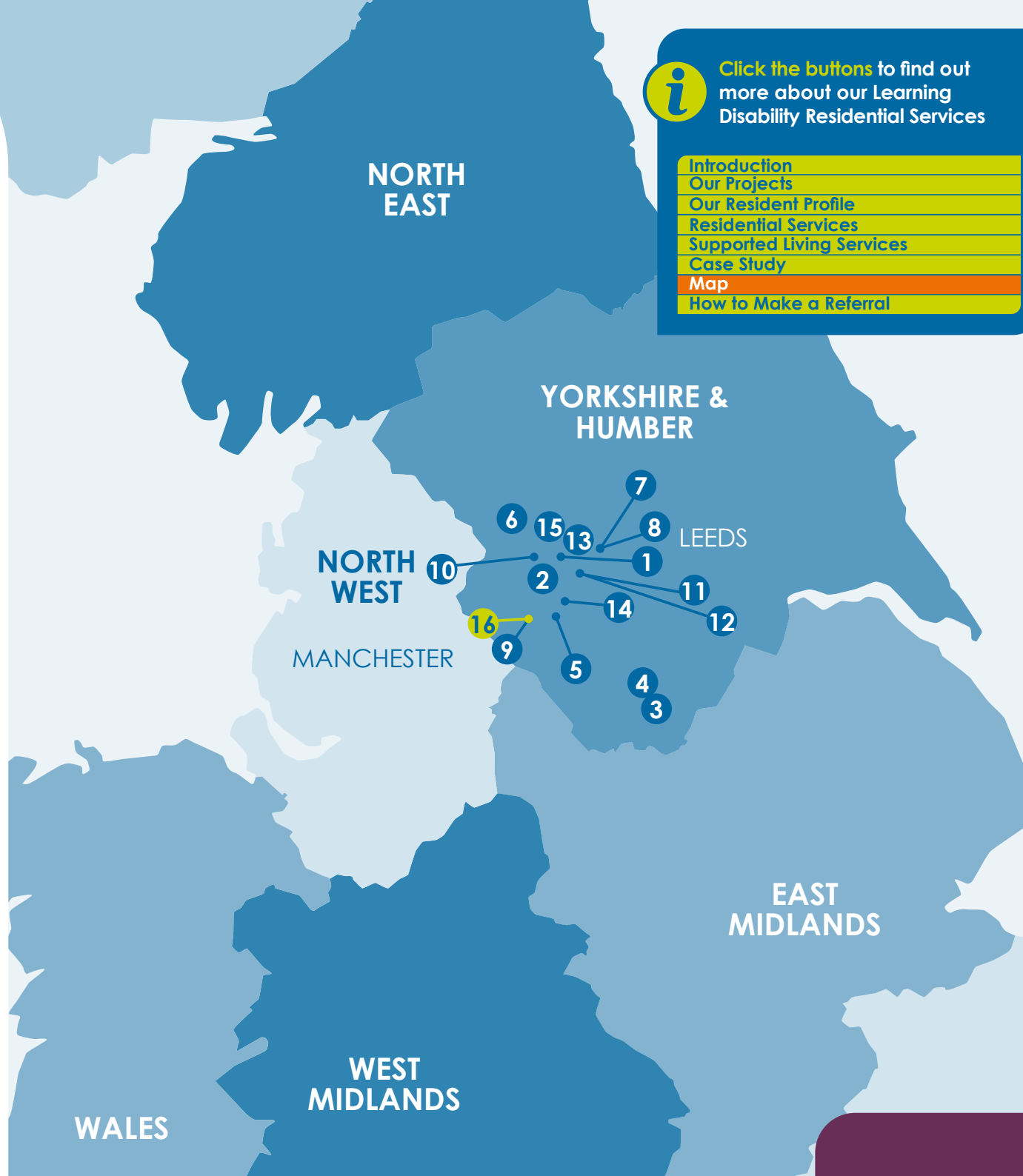
Residential Services

Supported Living Services

Case Study

Map

How to Make a Referral





# How to Make a Referral

For more information or to make a referral, please contact your regional Business Relationship Manager or email: [sc.referrals@cygnethealth.co.uk](mailto:sc.referrals@cygnethealth.co.uk)

- 1 Referral made to Cygnet Social Care and a desktop assessment is undertaken to review suitability for placement
- 2 If a suitable placement is identified, an assessment is arranged and undertaken by our specialist team
- 3 Feedback is provided on whether our service can meet the individual's needs
- 4 Detailed placement proposal is formulated to include care plans and funding information
- 5 Once placement is confirmed, transition plans are developed with all relevant stakeholders and admission date is agreed

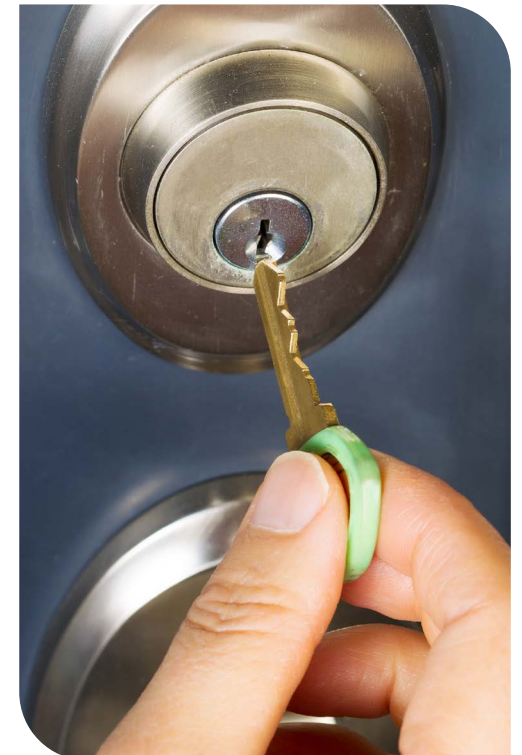


## Social Care Referrals



Click the buttons to find out more about our Learning Disability Residential Services

- Introduction
- Our Projects
- Our Resident Profile
- Residential Services
- Supported Living Services
- Case Study
- Map
- How to Make a Referral





*Improving lives together*



**Cygnet**

4 Millbank, 3rd Floor,  
Westminster, London  
SW1P 3JA

 **0207 123 5706**

**www.cygnetgroup.com**

**Follow us on social media:**



CYG-970 | Date of Preparation: 30/07/24

**Integrity**

**Trust**

**Empower**

**Respect**

**Care**